

Wireless Self-Organizing Network

Duración:

2 Días.

Horario:

9.30 a 17.30Hs.

Lugar:

Emerson Argentina – Av. Maipú 660 – Florida – Prov. Buenos Aires – Argentina

Curso dictado en: Español

Programa:


Section 1: Wireless Overview
Self-Organizing Network – How it Works
Security
Network Components
1420 Wiring
Configure and Connect PC
IP Address & Name
Security
Exercise

Section 2: Using the 1420
1420 Menu
Wireless Network Settings
Device Network Settings
Network Overview
Network Device Status
Device Detail
Explorer
HART Device Setup
Exercise



Section 3: Configuring the Transmitters

3051S WPT HART Menu Tree
Basic Setup
Power Mode & Transmitter Rate
Alerts
648 HART Menu Tree
Exercise: Configure with 375



Section 4: Using the 1420 with AMS Device Manager

Add 1420 (HSE) to AMS
Rebuild Hierarchy
1420 Configuration
3051S EDDL Screen
648 EDDL Screen
Exercise: Use the 1420 with AMS Device Manager



Section 5: Self Organizing Wireless Installation & Best Practices

6 Step Process for Wireless Networks
Best Practices
Impenetrables
Range Extenders
Exercise: Network Design



Section 6: Host Integration

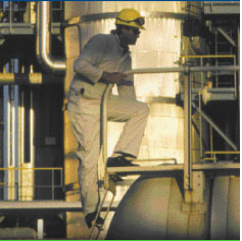
Modbus:
Modbus Setup , Modbus Register Assignment, Modbus Host Setup
Verify RS485 Communication
Modbus OPC Setup
Exercise: Modbus RS485
Exercise: Modbus OPC
DeltaV Modbus Serial Port Setup:
Data Set, View Values
Exercise: DeltaV



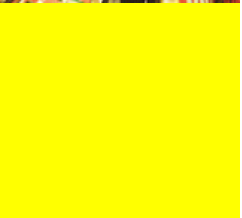
Section 7: 1420 Advanced Functions

Time
Stats
Security-Protocols
Point Page
Trends
Exercise: 1420 Advanced Features

Products covered, 1420, 648, 3051WPT, AMS Device Manager, OPC



Nota: Para llevar a cabo la operación la parte interesada deberá enviar una orden de compra a Emerson Argentina S.A. Los pagos se efectuarán en efectivo o con cheque a nombre propio emitido a nombre de Emerson Argentina S.A. El cobro del mismo debe ser posible con límite fecha de inicio del curso. De no efectuarse, en su totalidad, el pago antes del inicio del curso, la parte interesada pierde el derecho a participar del mismo.



Ante cualquier duda, favor de comunicarse con Educational Services,

Contacto: Cintia Gisele Hassan



Tel.: (54 11) 4796-7448 / 4837-7002

E-mail: Cintia.Hassan@Emerson.com o a través de la

Web: www.EmersonProcess.com.ar

